



# Sexual Assault Services of Northwest New Mexico

SHANNON L. HOSHNIC, MSW

RURAL PROGRAMS DIRECTOR, VICTIM ADVOCATE,  
PREVENTION EDUCATOR

622 WEST MAPLE STREET, STE. F

FARMINGTON, NM 87401

HOTLINE: 1.866.908.4700



# SASNWNM

## MISSION:

SEXUAL ASSAULT SERVICES IN SAN JUAN AND SURROUNDING COUNTIES TO EMPOWER VICTIMS, PROVIDE CRISIS SERVICES AND CREATE A COMMUNITY FOCUSED ON PREVENTION.

## VISION:

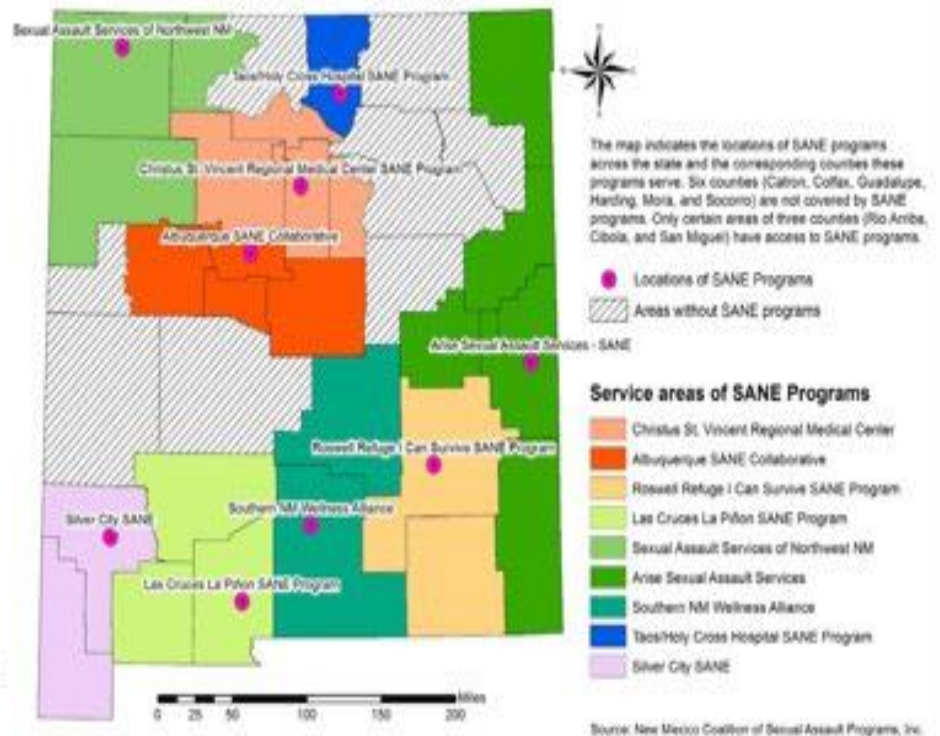
EVERY PERSON DESERVES A LIFE FREE OF SEXUAL VIOLENCE.

# New Mexico SANE, Service Facilities & Providers

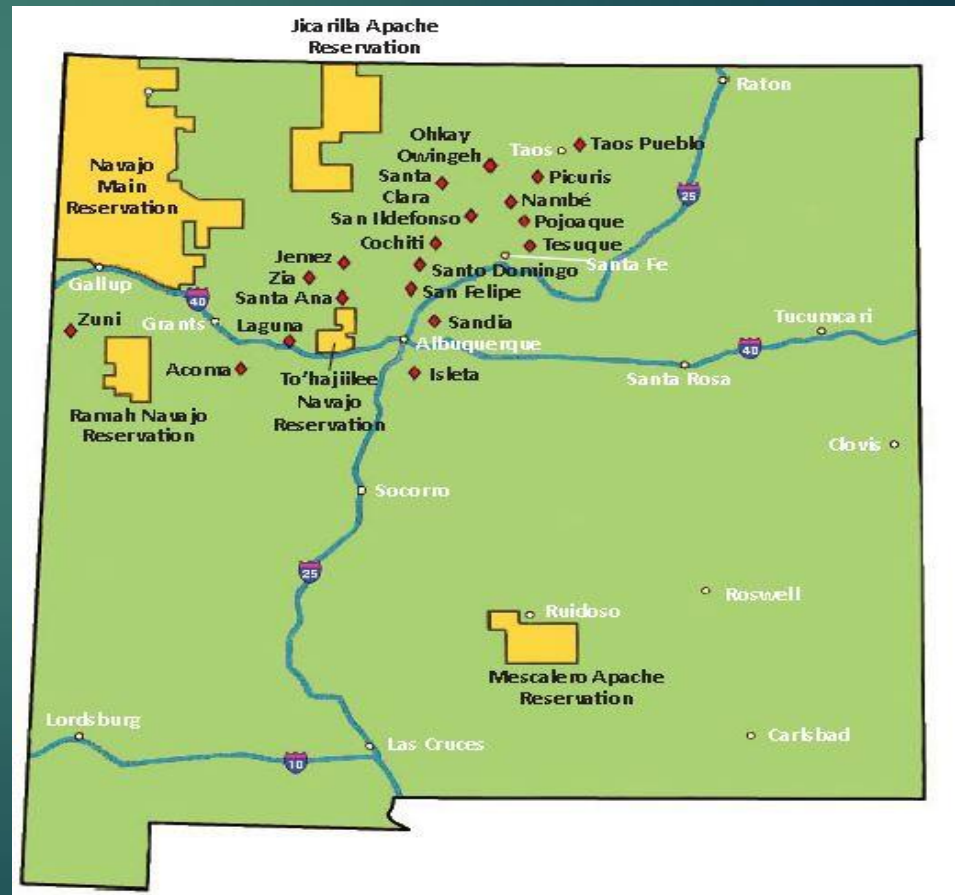
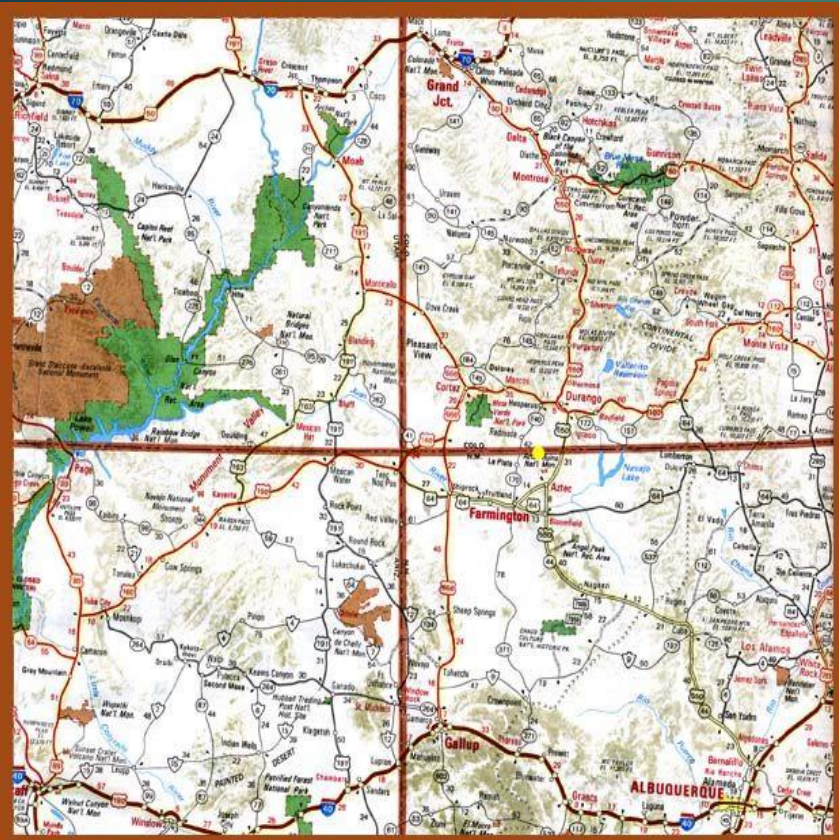
**Distribution of Service Facilities and Providers in New Mexico, as of December 2015**



**Locations of SANE Programs and their Assigned Counties, as of December 2015**



# Sexual Assault Services of NWNM: Service Areas in San Juan, McKinley, & Rio Arriba Counties and some surrounding areas.







# Sexual Assault Services of NWNM

24/7 HOTLINE

ON-SITE ADVOCACY- 4 STAFF ADVOCATES

CRISIS INTERVENTION

SEXUAL ASSAULT NURSE EXAMS

COUNSELING

LEGAL ADVOCACY

COMMUNITY EDUCATION & OUTREACH AND  
PREVENTION

# Sexual Assault Services NWNM

## Summary of Services

### 2020

#### SANE PROGRAM (SEXUAL ASSAULT NURSE EXAMINERS)

TOTAL EXAMS: 127

ADULT/ADOLESCENT (AGES 13+): 97

PEDIATRIC (AGES 0-12): 30

ADOLESCENT ONLY (AGES 13-17): 22

\*TOTAL CASES COMPLETED TO DATE (SINCE 9/03): 2,118

37% OF OUR CASES WERE UNDER THE AGE OF 18.

20% OF OUR CASES WERE CHILDREN UNDER THE AGE OF 12.

#### GENDER

FEMALE: 115

MALE: 12

TRANSGENDER: 0

#### ETHNICITY

NATIVE AMERICAN: 80

WHITE/NON-HISPANIC: 28

HISPANIC: 12

BI-RACIAL: 7

RAPE CRISIS 24-HR HOTLINE CALLS: 401

COUNSELING SERVICES: 67 NEW CLIENTS, 115 TOTAL CLIENTS, 1870 TOTAL APPOINTMENTS

NO THERAPY DUE TO COVID





# Shiprock SANE



- NORTHERN NAVAJO MEDICAL CENTER
- OPENED IN FEBRUARY 2017.
- PROVIDES SANE AND ADVOCACY SERVICES TO THE AREA.
- 24/7 ADVOCACY SUPPORT

JUDY WOLFE- SEXUAL ASSAULT CARE PROGRAM  
COORDINATOR

OFFICE- 505-368-6304

# SASNWNM- Gallup Office

111 South 1<sup>st</sup>. Street  
Gallup, New Mexico

JILL DRAVEN, KIMBERLY MARTIN, SUMMER MOREZ  
SASNWNM VICTIM ADVOCATES  
OFFICE: 505-399-5940

JEAN PROPER  
SEXUAL ASSAULT NURSE EXAMINER  
GALLUP INDIAN MEDICAL CENTER  
516 E. NIZHONI BLVD. #38  
OFFICE: 505-722-1171  
ER: 505-722-1166





# Advocacy



PROVIDE SUPPORT AND ADVOCACY TO VICTIMS WHO HAVE BEEN SEXUALLY ASSAULTED. SAS OF NWNM IS A SAFE SPACE FOR SURVIVORS OF SEXUAL VIOLENCE.

- MEDICAL, LEGAL, THERAPY REFERRAL, COMMUNITY RESOURCES, AND FOLLOW-UP.

7 STAFF ADVOCATES – FULL TIME FARMINGTON & GALLUP

# Advocacy- SANE



- ▶ Advocacy support during Sexual Assault Nurse Exam
  - ▶ From initial contact to end of exam
  - ▶ Provide resources and referrals- **Advocate packet**
  - ▶ Advocate will complete follow-up to ensure additional support can be provided if necessary
  - ▶ All required documents are explained thoroughly and signed
  - ▶ Accommodations for transportation-
    - ▶ Cab service- Lou Gos or KB Cab
    - ▶ \$25 Gas cards

# ADVOCACY- SANE



- PROVIDE EMOTIONAL SUPPORT DURING EXAM(ONLY IF THERES CONSENT FOR ADVOCATE TO BE PRESENT IN EXAM ROOM)
- ASSIST THE NURSE WITH DOCUMENTATION OF INJURIES
- GET MEDICATION FROM HOSPITAL
- SHIPROCK/GALLUP WILL PROVIDE MEDS
- NURSE WILL PROVIDE INFORMATION REGARDING DISCHARGE INFO- CARE OF INJURIES, MEDICATION, AND REFERRAL TO MEDICAL PROVIDER

# Advocacy



- ▶ Blankets
- ▶ Shower available if needed.
- ▶ Hygiene kits- Toothbrush, toothpaste, socks, bra, brush/comb, soap, shampoo/conditioner, shaver, pantyliners (pads/tampons).
- ▶ Clothes closet for clean clothes, underwear, shoes.
- ▶ Diapers, wipes, pull-ups
- ▶ Stuffed animals for children.
- ▶ Snacks during/after
- ▶ Care bag- masks, gloves, disinfectant wipes and hand sanitizer



# Advocacy- Post Exam

- ▶ Hotel stay if there are no other resources and no safe place to go
- ▶ Shelter referrals if appropriate
- ▶ Transportation
- ▶ Emergency funding assistance availability
  - ▶ SASNWNM is an administering agency for ER funding
    - ▶ Some examples if **deemed eligible**: eyeglasses, phone, food, clothing, rent, utilities- Advocate will explain in further detail how to complete this process.
- ▶ Assist with proper jurisdiction if a police report is requested to be made from victim. (if case is involving a minor proper guidelines will be followed)
- ▶ Restraining orders- Tribal and non-tribal
- ▶ Court appearances
- ▶ On-going advocacy and follow-ups will be consistent

# Outreach & Awareness



COUNSELING SERVICES WILL EXPAND TO SHIPROCK, CROWNPOINT, GALLUP AND DULCE AREAS.

SUPPORT GROUPS FOR SURVIVORS

COMMUNITY EDUCATION AND AWARENESS ON PREVENTION OF SEXUAL VIOLENCE.

- JUST MOVE IT
- CHAPTER HOUSE
- MONTHLY AWARENESS
- COMMUNITY WELLNESS/HEALTH FAIRS

# Prevention Programs

TOTAL OUTREACH EDUCATION/PREVENTION: 2,449 INDIVIDUALS

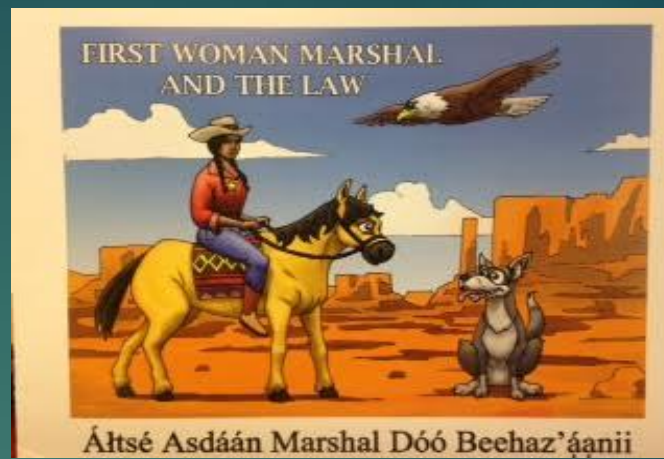
TRAINED ALMOST 2,500 STUDENTS, PROFESSIONALS AND COMMUNITY MEMBERS ON VARIOUS TOPICS RELATED TO SEXUAL ASSAULT, CHILD SEXUAL ABUSE, DATING VIOLENCE AND MANDATORY REPORTING.

PRIMARY PREVENTION OF SEXUAL VIOLENCE PROGRAMS:

SAFE DATES – GEARED FOR JUNIOR HIGH AND HIGH SCHOOL STUDENTS

CARE FOR KIDS – GEARED FOR CHILDREN AGES 3-8; INCLUDES A PARENT AND TEACHER EDUCATION SESSION.

\*ADVOCACY IS PROVIDED DURING THESE SESSION AS A NEED BASIS. THERE IS DISCLAIMER AT THE BEGINNING OF EACH SESSION SO THAT IF THERE IS A TIME A STUDENTS CHOOSES TO SPEAK TO US (ADVOCATE) FOR ANY REASON AT ALL WE PROVIDE THAT TIME FOR THEM. PRIVATELY.

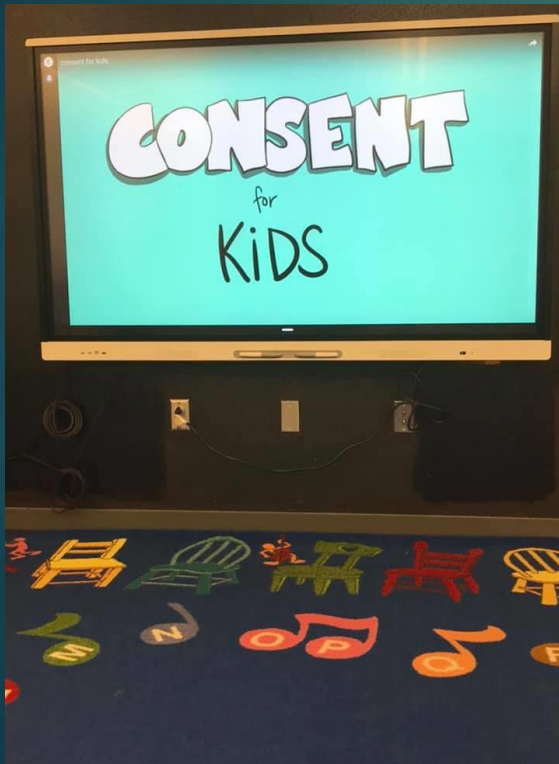


**CARE FOR KIDS- EVIDENCE BASED CHILD SEXUAL ABUSE PREVENTION PROGRAM.**

**GOAL FOR CFK- TO PREVENT CHILD SEXUAL ABUSE THROUGH HEALTH EDUCATION AND PREVENTION.**

- BODIES, BABIES, FEELINGS, TOUCHING, BEDTIME, SECRETS & SURPRISES. AGES 3-8 YEARS OLD
- PARENTS, GUARDIANS, & ORGANIZATION'S STAFF CAN PARTICIPATE IN SESSIONS AND TRAININGS.

**31% OF CHILDREN WERE VICTIMS OF PHYSICAL FORCE, THEY WERE MOST COERCED BY MANIPULATION(38%), VERY FREQUENTLY COERCED BY VERBAL THREAT (24%) AND RARELY COERCED BY INTENTIONAL DRUGGING (2%). (CAPONERA, 2015)**





# BED TIME

- body parts
- sleeping
- go to sleep
- Fix your bed
- restroom
- brush teeth
- shower
- plug in phone.

---

## Touchy-Touchy

GET SOME HELP PEOPLE

Today we talked about touching and not touching, when we don't want to be touched we say "stop it, get some help". Then we talked about saying "no" and saying "no" when we feel uncomfortable. We tell a trusted adult. This way we are safe!!! Also get some help

**RAYLIN** did All the work!!!

# TOUCHING BED TIME

<p>Private/Public Parts.</p> <p>Being un/comfortable.</p> <p>Having Consents.</p> <p>'Get some help.'</p> <p>Genders</p> <p>Controls/actions.</p>	<p>Shower.</p> <p>Brush ur teeth.</p> <p>Brush ur hair.</p> <p>P.J'S.</p> <p>Homework.</p> <p>Sleeping.</p>
---	---

Amelia J.

Hannah B.

Ashlynn M.

# Bed time touching

- Sleep well.
- sleepy.
- stretch.
- Brush your teeth.
- Shower
- get under cover
- Read a bed time story.

- no touching other private parts.
- Don't touch our friend's private parts.
- Let them know you got some help.
- Make sure that no one touches you.
- Tell your parents that someone is touching you.
- When your something make sure no one touches you.
- Stop here when you someone is touching you.
- Make sure that no one touches you.
- get some help!!!

Cienna

Angelaque

# TOUCHING BED

NO TOUCHING BUTT

NO TOUCHING WEATS

NO TOUCHING BOT

Hot Oh Fix

NO TOUCHING

Klaris's Butt

a mile tak

Bay



# October is Domestic Violence Month

Beware on...

- Social Media
- Unknown Friends
- Bad Advice
- Strangers
- Unhealthy Relationship
- Give Consent
- Danger
- Abuse
- Jealousy

# Sexual Violence Statistics

- ▶ In 2015, service providers reported that in 82% of their cases, the offender was the same race/ethnicity as the client. When examined by race/ethnic group, more Native American victims (96%) were victimized by someone of their own race, than Hispanic victims (87%), and White (non-Hispanic) victims (80%).
- ▶ In two-thirds (60%) of service provider cases that identified the nature of the rape, the survivors were victims of incest.
- ▶ In 2015, Native American survivors (64%) were significantly more likely to obtain forensic evidence collection than survivors of mixed race (29%), White (non-Hispanic) survivors (26%) .

Source :Sex Crimes in New Mexico XIV:An Analysis of 2015 Data from The New Mexico Interpersonal Violence Data Central Repository